

AM20 Plantation Shutter Motor Manual Instruction



AM20-D50N-82MM

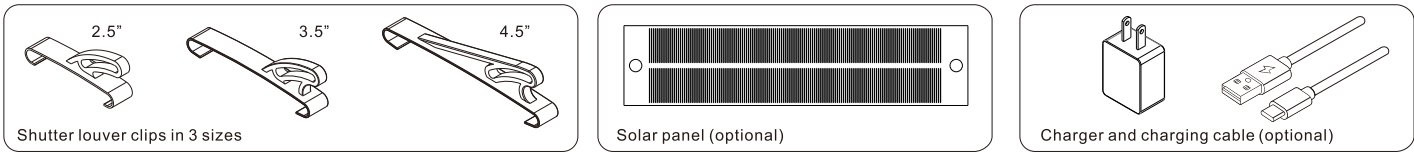
I. Motor Features

- User friendly removable battery case; accept 5V type-C USB charging
- Built-in 900mAh rechargeable lithium battery. Motor can connect with solar panel extending running time.
- Compatible both Bluetooth bi-directional communication control and radio frequency remote control.
- Featuring rational light tilting mode and one touch tap-to-run mode.
- The push/pull force is up to 50N (5kgs).
- Running speed 5mm/s, quick response.
- Various fixed methods are available, screws fixed and 3M adhesive tape.

II. Motor specification

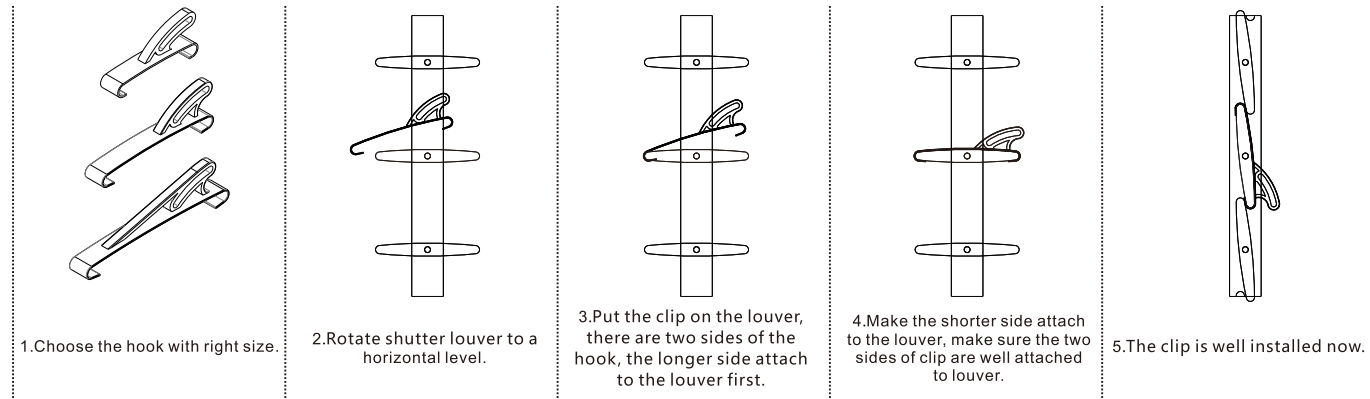
Push/ pull power	Running speed	Running distance	Rated power	Charging voltage	Battery capacity	Standby time	RF frequency	IP class	Operation life	Working Temperature
50N	5mm/s	0-82mm	2W	5VDC	lithium battery 900mAh	3 months(It is recommended to charge every three months)	433.92MHz	IP32	15000 times	-10°C --+55°C

III. Accessory



IV. Installation instructions

Shutter louver clips installation method

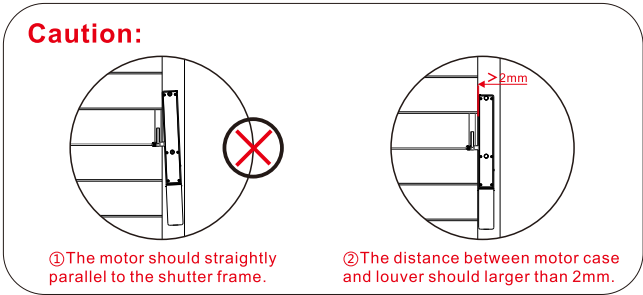


In order to achieve better light blocking effect, the clip is recommended to install onto the middle louver of the shutter.

Plantation Motor Installation Method

Preparation

- 1.When the clip is well installed, make the shutter louvers fully closed.
- 2.The driving rod of the motor should run to the lowest limit(the default limit of the motor is lower limit),and insert the rod to the arc-shaped hole of the hook.
- 3.Pull the motor straightly down, make sure the shutter louvers are tightly closed, and mark down the position of the motor.



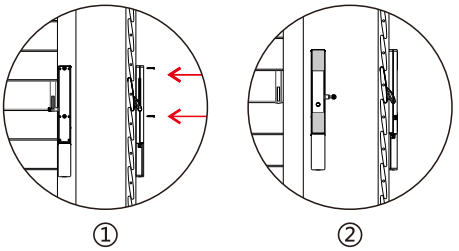
Fixed the motor

Method 1: screw fixed

- a.Fix the motor onto shutter and mark position.
- b.Use Phillipe screwdriver to fix two screws on the motor(like the right picture①), the screws are in the accessory kit package.
- c.Attached the clip to motor rod, lock the screw nuts.
- d.Press the two screw caps into the screw holes, Motor installation completed.

Method 2: 3M adhesive tape fixed

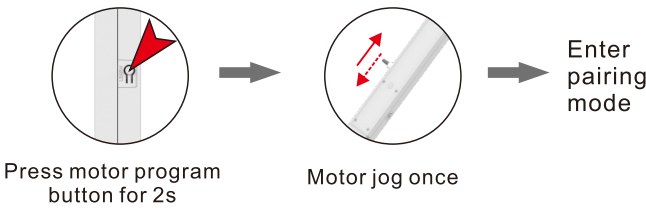
- a.Put the 3M adhesive tape on motor(like right picture②), don't attach the adhesive tape on battery pack.
- b.Install the motor on the marked position.
- c.Attached the clip to motor rod, lock the screw nuts.
- d.Press the two screw caps into the screw holes, Motor installation completed.



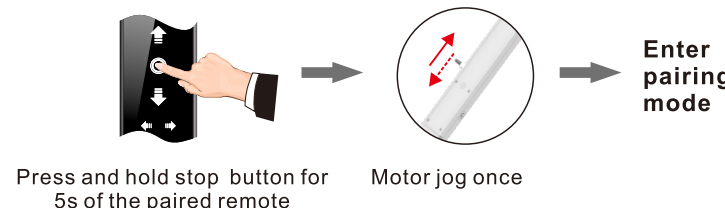
V. Operating instructions

1.Enter pairing mode

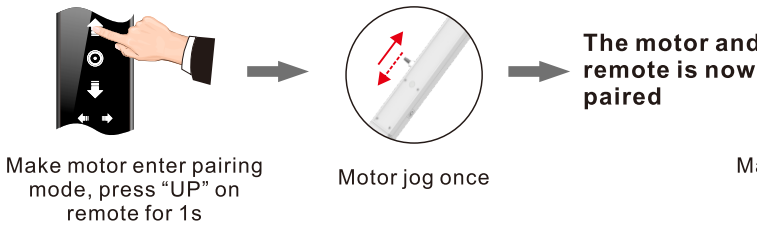
Method 1



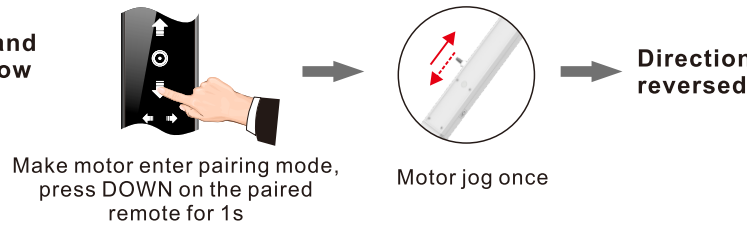
Method2



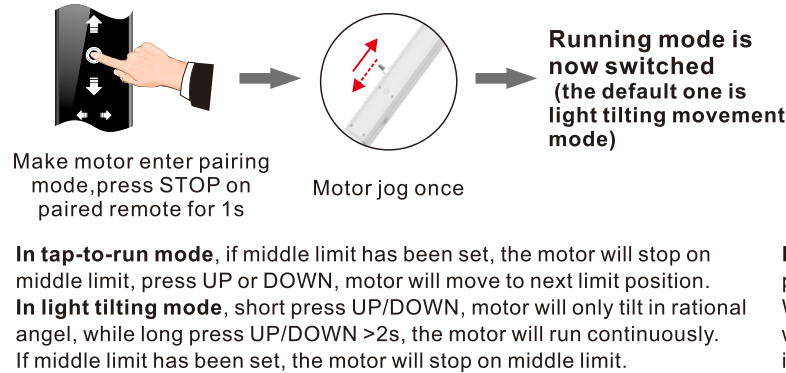
2.Pair to remote



3.Reverse motor direction

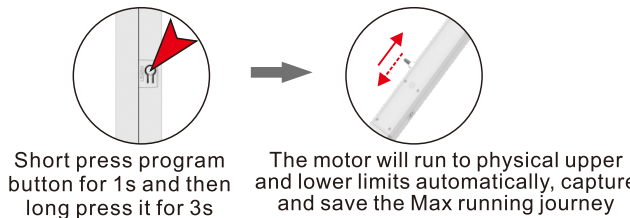


4.Switch light tilting mode and tap-to-run mode



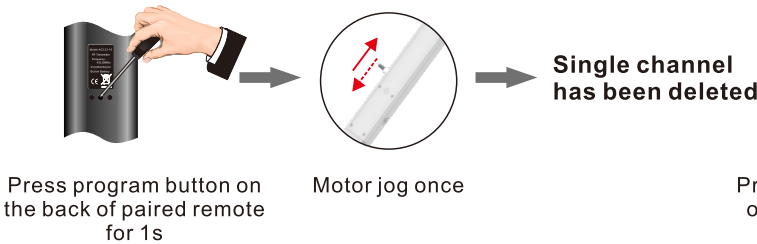
5.Movement calibration function

(one short press + one long press)

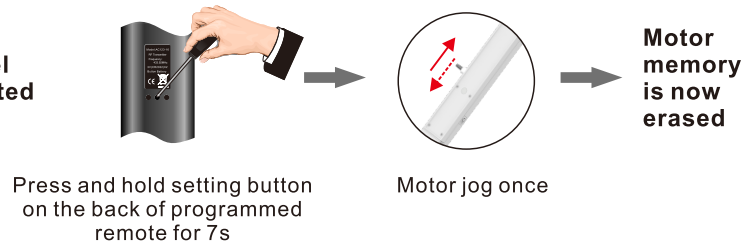


Movement calibration function: Automatically capture and save physical upper and lower limits, this will help to protect the motor case. When motor is in movement calibration mode, the push/ pull power will be reduced so that motor can be easier to record the max journey. it's recommended to calibrate the journey each time before installation in no-load condition.

6.Delete single channel

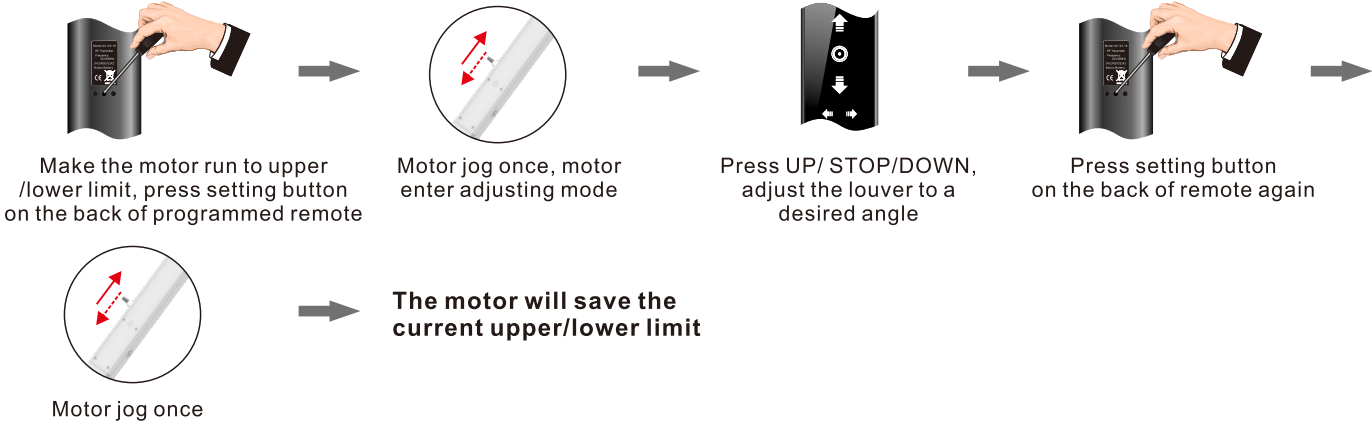


7.Delete all memories

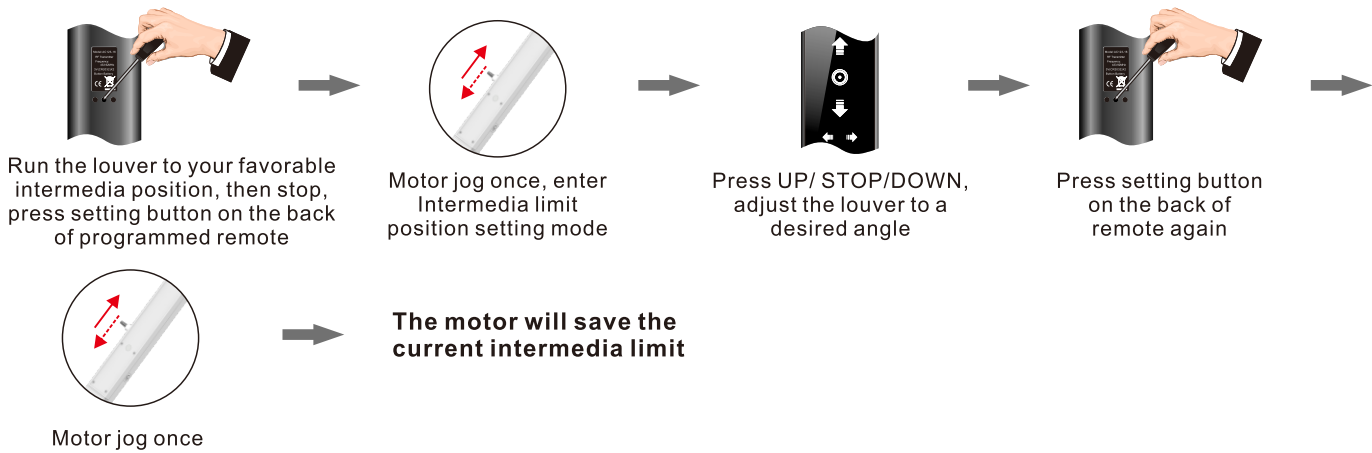


8.Adjust upper/lower limits

When movement calibration finished, the default upper limit is max journey calibration, and the lower limit is minimum journey calibration.

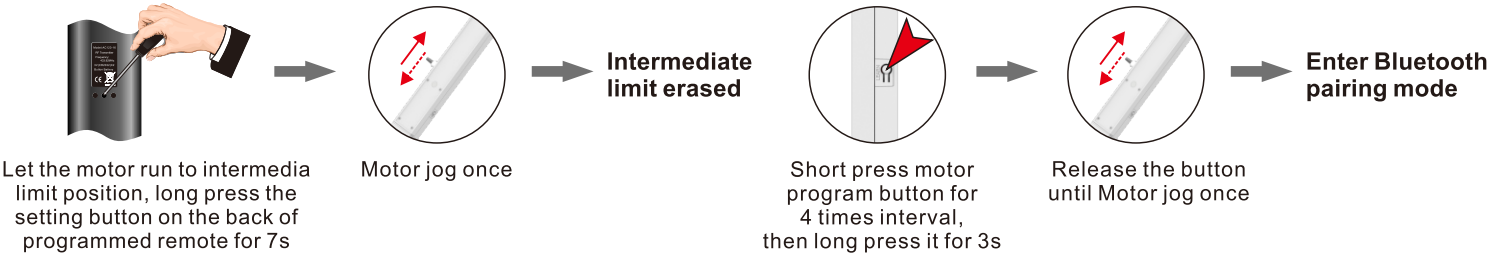


9. Intermedia limit position setting

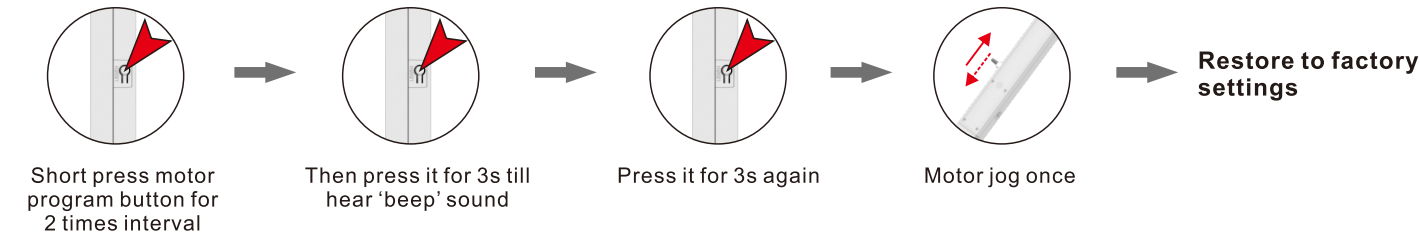


10. Delete Intermedia limit

11. Send motor to Bluetooth pairing mode (4 short press and 1 long press)



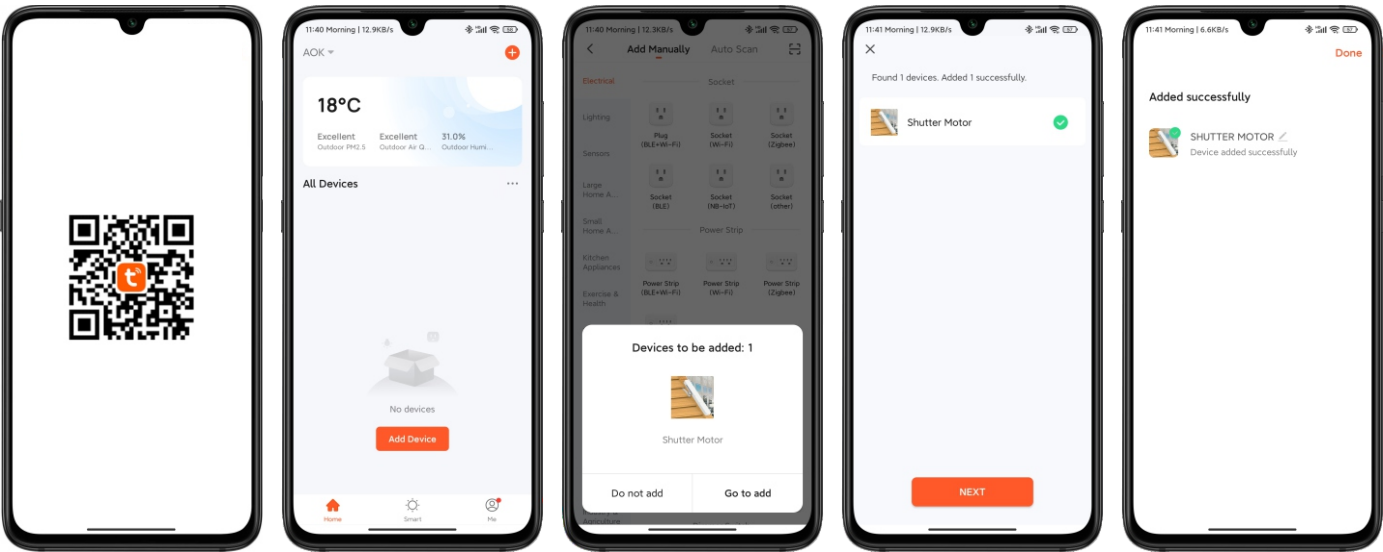
12. Restore factory settings (2 shot press + 2 long press)



Restore factory settings won't delete movement calibration position, if there is problem with journey calibration, need to do the Movement calibration function again.

13. APP Operating instructions

1. Add device



a. Scan above barcode to download Tuya App, or Download the APP "Tuya Smart" on Apple Store or Google Play Store, register an account and login in.

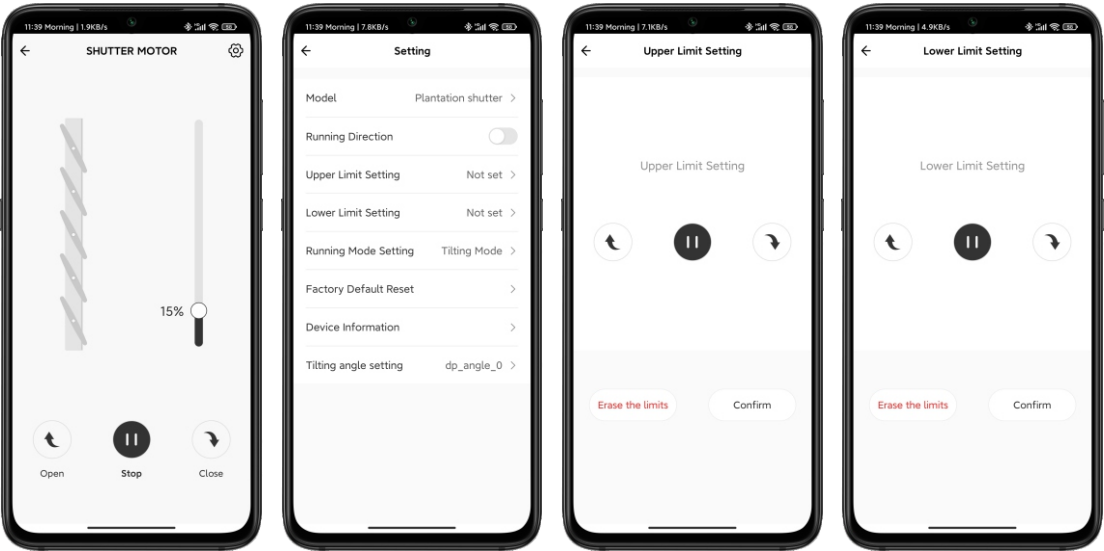
b. press 'add device' or press '+' button in the top right-hand corner.

c. The App will automatically scan the motor nearby you. Choose the one you want to add and press 'Go to add'

d. press 'next'

e. press 'done' , device added.

2. APP functions



a. open: motor moving up
b. stop: motor stop running
c. close: motor moving down
d. Percentage control: you can move to any position you want, the positions between upper limit and lower limit display in percentage.

e. Reverse the running direction: Reverse the running direction of open and close, this function is designed for installing the motor upside down.

f. Set upper limit: set upper limit on current position, can adjust positions by pressing open and close.

g. Set lower limit: set lower limit on current position, can adjust positions by pressing open and close.

h. Delete limits: delete upper limit and lower limit at the same time. The motor will restore to max journey limit and minimum journey limit.

VI.Trouble shooting

No.	Issues description	Reasons	Solutions
1	After motor installed, it's not moving or moving slowly	A. motor overloaded B. Low battery capacity	A. check the motor if it's installed in a right way B. charge the battery
2	The motor stops suddenly when running	C. motor overload D. Low battery capacity E. Motor over heated	C. check the louvers are whether get stuck D. charge the battery E. run the motor when its temperature colds down.
3	Motor can only be stop by hitting obstacle each time	F. There is running deviation for the motor or motor installed in a wrong position.	F. Set the Movement calibration function again and check whether motor is installed properly